

Non-Profit Org.  
U.S. Postage  
PAID  
St. Paul, MN  
Permit No. 4577

Metropolitan Symphony Orchestra

P.O. Box 581213  
Minneapolis, MN 55458-1213  
(651) 645-4283

Return service requested

PLEASE POST



# Metropolitan Symphony Orchestra 28th Season

William Schrickel,  
Music Director



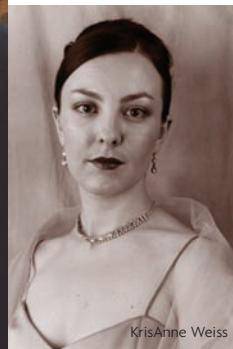
Minnesota Chorale



Osmo Vänskä



Takako Seimiya Senn



KrisAnne Weiss

The Metropolitan Symphony Orchestra's 28th season, its tenth under the baton of Music Director William Schrickel, features an exciting collaboration with the Minnesota Chorale in Carl Orff's stunning *Carmina Burana*; solo performances by clarinetist Osmo Vänskä, trumpeter Takako Seimiya Senn and mezzo soprano KrisAnne Weiss; and anniversary celebrations

of composers Franz Joseph Haydn, Felix Mendelssohn and Samuel Barber. Commissioned works by Vänskä and John Tartaglia rub elbows with masterpieces of Beethoven and Respighi, and Joan Tower's *Fanfare for the Uncommon Woman* stands tall next to Aaron Copland's *Fanfare for the Common Man*. With presentations of music from *Star Wars* and gems by three of Russia's greatest composers, you'll want to be in the audience for every concert of the Metropolitan Symphony Orchestra's 2009-2010 season!

[www.msoa.net](http://www.msoa.net)



William Schrickel, Music Director

William Schrickel has been the Music Director of the Metropolitan Symphony Orchestra since 2000. A former Assistant Conductor of the Minnesota Orchestra, he was also Music Director of the St. Cloud Symphony Orchestra from 2002-2008 and received a prestigious Award for Adventurous Programming from ASCAP and the League of American Orchestras in 2006. He has led performances of the Minnesota Orchestra, the Bloomington Symphony Orchestra, the Kenwood Symphony, The Chamber Music Society of Minnesota and The Musical Offering.

Schrickel joined the double bass section of the Minnesota Orchestra in 1976, became assistant principal in 1995 and is currently the acting principal bassist. He has performed three times as soloist with the Minnesota Orchestra under



the direction of Leonard Slatkin and Andrew Litton.

An active chamber musician, Schrickel has performed and recorded with the Hill House Chamber Players and the Minneapolis Artists Ensemble. He has participated in the Minnesota Orchestra's *Adopt-A-School* music education program since 1993.





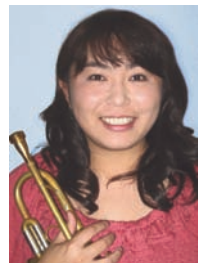
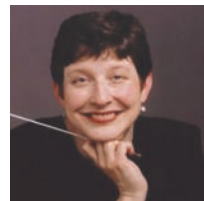
**Metropolitan Symphony Orchestra  
2009-2010**

*Beethoven and More: Season Opener*  
Sunday, October 11, 2009 at 4pm  
Trinity Lutheran Church, 115 4th Street North, Stillwater

**William Schrickel, conductor**

- Joan Tower – *Fanfare for the Uncommon Woman #1*
- Samuel Barber – *Adagio for Strings*
- Ottorino Respighi – *Fountains of Rome*
- Ludwig van Beethoven – *Symphony #4 in B-flat major, op. 60*

William Schrickel launches his tenth season as Music Director of the Metropolitan Symphony Orchestra with a program comprising landmark American works for brass and strings, a musical Roman travelogue and Beethoven's mercurial Fourth Symphony.



Left to right:  
Osmo Vänskä  
Kathy Saltzman Romey  
Takako Seimiya Senn  
KrisAnne Weiss  
John Tartaglia



**Fairview Benefit:  
Saturday, May 1, 2010**  
Fick Auditorium, Edina High School  
Watch [www.msoa.net](http://www.msoa.net) or  
call 612-728-2309 for details on this  
concert to benefit Fairview hospice  
and music therapy programs.

[www.msoa.net](http://www.msoa.net)

**Vänskä Plays Mozart/MSO Plays Vänskä**  
Sunday, November 22, 2009 at 4pm

Central Lutheran Church, 333 South 12th Street, Minneapolis

**William Schrickel, conductor**  
**Osmo Vänskä, clarinet**

- Samuel Barber – *Mutations from Bach (1967)*
- Franz Joseph Haydn – *Overture to The World on the Moon, H. 28/7*
- Wolfgang Mozart – *Concerto for Clarinet & Orchestra in A major, K. 622, Osmo Vänskä, clarinet*
- Osmo Vänskä – *The Bridge (MSO Commission)*
- Felix Mendelssohn – *Symphony #1 in C minor, op. 11*

Osmo Vänskä, Music Director of the Minnesota Orchestra, performs Mozart's beloved Clarinet Concerto on a concert featuring Vänskä's own *The Bridge* as well as music commemorating major life anniversaries of Samuel Barber, Franz Joseph Haydn and Felix Mendelssohn.

**Concerts are free, though donations are requested. Programs subject to change.**

Brochure acknowledgments: Karen Anderson, Travis Anderson, Katherine Eklund, Ann Marsden, Tom Schrickel, William Schrickel, Diane Schroeder 8/09 3.5M

**Celebrate! 1-Hour Family-Friendly Concert**  
Sunday, January 31, 2010 at 3pm

St. Matthew's Catholic Church, 490 Hall Avenue, St. Paul

**Sunday, February 7, 2010 at 3pm**

St. Joseph's Catholic Church, 1310 Mainstreet, Hopkins

**William Schrickel, conductor**

**Students from Wellstone Center/Neighborhood House, guest artists\***

\*St. Matthew's only Bring a food donation to either concert for community food shelves.

- Carl Maria von Weber – *Jubel Overture, J.245, op. 59*
- Aaron Copland – *Fanfare for the Common Man*
- Joan Tower – *Fanfare for the Uncommon Woman #2*
- Felix Mendelssohn – *Wedding March from A Midsummer Night's Dream, op.61*
- Leo Arnaud – *Fanfare (Olympic Theme)*
- Charles Ives (orch. Schuman) – *Variations on "America"*
- John Williams – *Throne Room & End Title from Star Wars Suite*
- Dmitri Shostakovich – *Festive Overture*

Music composed for celebrations will delight listeners of all ages in this special 1-hour family-friendly program. Fanfares, marches, anthems and a memorable movie score make for a thrilling concert!

**Carmina Burana Special Ticketed Event**

**Sunday, March 14, 2010 at 3pm**

Hopkins High School, 2400 Lindbergh Drive, Minnetonka

**William Schrickel & Kathy Saltzman Romey, conductors**  
**Minnesota Chorale (Kathy Saltzman Romey, Artistic Director)**

- Samuel Barber – *Second Essay for Orchestra, op. 17*
- Ralph Vaughan Williams – *Serenade to Music, Minnesota Chorale*
- Carl Orff – *Carmina Burana, Minnesota Chorale*

The Metropolitan Symphony Orchestra and the Minnesota Chorale join forces to present Carl Orff's monumental *Carmina Burana* in this special ticketed concert. Instrumental music of Barber and a choral gem by Ralph Vaughan Williams round out this gala collaboration.

Call 952-930-5100 or check the MSO's website at [www.msoa.net](http://www.msoa.net) for information on purchasing tickets: \$18 general admission; \$10 student/senior.

**Your financial support is vital** to keep our concerts free for all audiences. The Metropolitan Symphony Orchestra has a long history of performing first-class concerts without charging admission. We can do this only with the help of generous contributions from the many individuals, corporations and foundations that underwrite our expenses. Your tax-deductible donation helps cover the costs of presenting these exciting performances and allows us to keep the doors wide open to all listeners to experience a live symphony concert.

**Please donate today! Make a secure online contribution at**

[www.msoa.net](http://www.msoa.net) or mail this form to:

**Metropolitan Symphony Orchestra**  
P.O. Box 581213  
Minneapolis, MN 55458-1213  
Phone: (651) 645-4283

Make checks payable to *Metropolitan Symphony Orchestral Association*. Metropolitan Symphony Orchestra is a not-for-profit tax-exempt organization. Contributions to the Metropolitan Symphony Orchestra are tax-deductible to the extent of the law. Your generous donation of any amount is greatly appreciated.

My tax-deductible contribution:

- |                       |                    |                   |            |
|-----------------------|--------------------|-------------------|------------|
| _____ \$2,000+        | Conductor's Circle | _____ \$200-\$499 | Benefactor |
| _____ \$1,000-\$1,999 | Guarantor          | _____ \$100-\$199 | Patron     |
| _____ \$500-\$999     | Sponsor            | _____ \$50-\$99   | Friend     |

YOUR NAME(S) as you wish it to appear in our programs and/or as it appears on your credit card

If this gift is in memory or on behalf of someone, please fill in here.

ADDRESS

CITY

STATE, ZIP

PHONE: DAY/EVE

EMAIL

VISA/MC/AMEX NUMBER

Circle credit card type and fill in card information or enclose a check.

EXP. DATE

SECURITY CODE

AMOUNT

Increase your contribution by using your employer matching gift program. Make automatic recurring donations by checking our website: [www.msoa.net](http://www.msoa.net)

*The mission of the Metropolitan Symphony Orchestra is to perform outstanding symphony concerts for diverse audiences throughout the Twin Cities metropolitan area. Join us and thrill in the excitement of live orchestral performances.*

**Russian Masters**

**Sunday, April 25, 2010 at 4pm**

Bethlehem Lutheran Church, 4100 Lyndale Avenue South, Minneapolis

A concert of the Bethlehem Music Series

**William Schrickel, conductor**  
**Takako Seimiya Senn, trumpet**  
**KrisAnne Weiss, mezzo soprano**

- Mikhail Glinka – *Krakowiak from A Life for the Tsar*
- Peter Tchaikovsky – *Polonaise from Eugene Onegin*
- Alexander Arutiunian – *Concerto for Trumpet & Orchestra*  
*Takako Seimiya Senn, trumpet*
- John Tartaglia – *Dark Night—Glad Day (MSO Commission)*  
*KrisAnne Weiss, mezzo soprano*
- Nicolai Rimsky-Korsakov – *Russian Easter Overture, op. 36*

Russian symphonic jewels by Glinka, Tchaikovsky and Rimsky-Korsakov are the musical bookends of a program that includes Arutiunian's dazzling trumpet concerto and the world premiere of an MSO commission, John Tartaglia's evocative *Dark Night—Glad Day*.