

Play your part in the MSO and donate today!

Your support is vital to keep our concerts free for all audiences. The Metropolitan Symphony Orchestra has a long history of performing first-class concerts without charging admission. We can do this only with the help of generous contributions from the many individuals, corporations, and foundations that underwrite our expenses. Your tax-deductible donation helps cover the costs of presenting these exciting performances and allows us to keep the doors wide open to all listeners.

Make a secure on-line contribution at msomn.org/donate or mail this form to:

Metropolitan Symphony Orchestra
P.O. Box 581213
Minneapolis, MN 55458-1213
Phone: (612) 567-6724

Make checks payable to Metropolitan Symphony Orchestral Association. The Metropolitan Symphony Orchestra is a not-for-profit tax-exempt organization. Increase your contribution by using your employer's matching gift program. Contributions to the MSO are tax-deductible to the extent of the law.

My tax-deductible contribution:

- _____ \$1000+ Guarantor
- _____ \$500-\$999 Sponsor
- _____ \$200-\$499 Benefactor
- _____ \$100-\$199 Patron
- _____ \$50-\$99 Friend
- _____ \$0-\$49 Supporter

Any amount is greatly appreciated!

YOUR NAME(S) for our programs and/or as it appears on your credit card.

If this gift is in memory or on behalf of someone, please fill in here.

ADDRESS

CITY STATE ZIP

PHONE: DAY/EVE

EMAIL

VISA/MC/AMEX NUMBER

Circle credit card type and fill in card information or enclose a check.

EXP. DATE SECURITY CODE AMOUNT
(VISA/MC code = 3 digits on card back, AMEX code = 4 digits on card front)

Make automatic recurring donations at msomn.org/donate



MSO Music Director
William Schrickel

Welcome to the Metropolitan Symphony Orchestra's 38th season, my 20th as the MSO's Music Director. Each program features music by a living composer: premieres by Carol Barnett (a Shakespearean song cycle created for mezzo-soprano Clara Osowski, with actress Christina Baldwin as soliloquist), Polina Nazaykinskaya, John Orfe, and the setting of a Brothers Grimm fairy tale by writer/storyteller Kevin Kling and composer Victor Zupanc. Mahler's iconic 5th Symphony, Bizet's *Carmen*, and Tchaikovsky's *Romeo and Juliet* share the spotlight with concerti by Shostakovich and Chaminade, witty ballet music by Dominick Argento, and Nathaniel Stookey and Lemony Snicket's hilarious *The Composer Is Dead*, narrated by Jake Endres. Come and join us!

—Music Director William Schrickel



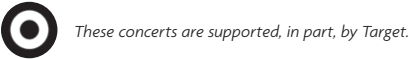
The mission of the MSO is to perform outstanding symphony concerts for diverse audiences throughout the Twin Cities metropolitan area. Our core values are: to invite audiences to share the power and energy of live symphony concerts in convenient neighborhood venues; to perform the full spectrum of symphonic music and encourage artistic growth in our volunteer players; and to work with host organizations to present and promote symphonic performances in their communities.


Metropolitan Symphony Orchestra
P.O. Box 581213
Minneapolis, MN 55458-1213

Return service requested



This activity is made possible by the voters of Minnesota through grants from the Minnesota State Arts Board and the Metropolitan Regional Arts Council, thanks to a legislative appropriation from the arts and cultural heritage fund.



Non-Profit Org.
U.S. Postage
PAID
TWIN CITIES, MN
Permit No. 26920



The Metropolitan Symphony Orchestra

William Schrickel, Music Director

2019-2020

Kevin Kling Channels the Brothers Grimm

Sunday, October 13 at 4pm

Roseville Lutheran Church, 1215 Roselawn Avenue West, Roseville, MN

William Schrickel, conductor
Kevin Kling, narrator
Sarah Wright, violin

Victor Zupanc/ Kevin Kling – *The Twelve Dancing Princesses*
(MSO Commission – World Premiere)
Dmitri Shostakovich – Violin Concerto No. 1 in A minor, op. 77

The Metropolitan Symphony Orchestra and Music Director William Schrickel open the season by welcoming back author Kevin Kling to narrate the world premiere of *The Twelve Dancing Princesses*, Kling’s humorous setting of the Grimm brothers’ classic fairy tale with music by Victor Zupanc. The program concludes with MSO Solo Competition winner Sarah Wright performing Russian composer Dmitri Shostakovich’s dark and virtuosic Violin Concerto No. 1, written for David Oistrakh in 1948, then locked away by Shostakovich until the death of Joseph Stalin five years later.



Sarah Wright



Kevin Kling



Dominick Argento



Victor Zupanc



John Orfe

Music for the Opera, Ballet, Theater & Concert Hall

Sunday, November 24 at 4pm

St. Philip the Deacon Lutheran Church
17205 County Road 6, Plymouth, MN

William Schrickel, conductor

Dominick Argento – *Royal Invitation* (Homage to the Queen of Tonga)
John Orfe – *Oyster* (MSO World Premiere of Large Orchestra Version)
Georges Bizet – *L’Arlesienne* Suite No. 2: *Pastorale, Minuetto & Farandole*
Georges Bizet – *Carmen* Suite No. 1: *Prelude, Aragonaise, Intermezzo, Seguedille, Les Toreadors*

French composer Georges Bizet died in 1876 at the age of 36, convinced that his opera, *Carmen*, was a failure. Selections from *Carmen* (currently the second most performed opera in the world!), along with Bizet’s incidental music from *L’Arlesienne*, are featured on this MSO program that also includes the world premiere of John Orfe’s full-orchestra version of *Oyster*, a brilliantly energetic showpiece. The MSO’s performance of Dominick Argento’s witty ballet score, *Royal Invitation* (Homage to the Queen of Tonga), is dedicated to the memory of the orchestra’s former Composer Laureate who passed away on Feb. 20, 2019.

The Composer Is Dead!

One-Hour Family-Friendly Concerts

Sunday, February 9 at 3pm

Church of St. Matthew, 490 Hall Avenue, St. Paul, MN

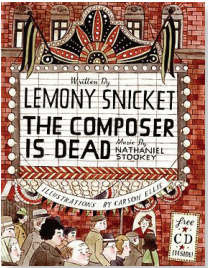
Sunday, February 16 at 3pm

North Community High School
1500 James Avenue North, Minneapolis, MN

William Schrickel, conductor
Jake Endres, narrator

Nathaniel Stookey/Lemony Snicket – *The Composer Is Dead*
John Williams – *Star Wars* Suite – *Throne Room & Finale*

Jake Endres returns to join William Schrickel and the MSO in Nathaniel Stookey’s entertaining musical whodunit, *The Composer Is Dead*, bringing to life writer Lemony Snicket’s charming murder mystery that cleverly introduces the audience to all the instruments of the orchestra while unearthing the identity of the person or persons who killed the (formerly) living composer. George Lucas’ *Star Wars* saga is more popular than ever, and the MSO concludes this special one-hour family concert with John Williams’ music from the final scene of the first *Star Wars* film, released 42 years ago.



Shakespeare & Chaminade

Sunday, May 10 at 4pm

Roseville Lutheran Church
1215 Roselawn Avenue West,
Roseville MN

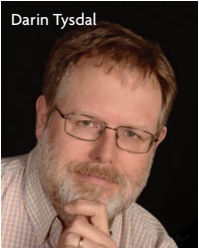
Sunday, May 17 at 4pm

Central Lutheran Church
333 South 12th Street, Minneapolis, MN

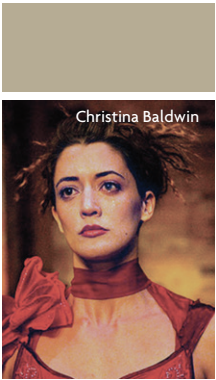
William Schrickel, conductor
Darin Tysdal, piano
Clara Osowski, mezzo-soprano
Christina Baldwin, soliloquist

John Tartaglia – *Pavane* for Harp & Strings (2003 MSO Commission)
Cécile Chaminade – *Concertstück* for Piano & Orchestra, op. 40
Carol Barnett – *Will’s Ladies* (MSO Commission—World Premiere)
Pyotr Tchaikovsky – *Romeo and Juliet*, TH 42

Mezzo-soprano Clara Osowski returns for her fourth solo appearance with the MSO to sing the world premiere of *Will’s Ladies*, Minneapolis composer Carol Barnett’s setting of soliloquies (recited by actress Christina Baldwin) of five Shakespearean female lead characters: Portia, Juliet, Ophelia, Lady Macbeth, and Cleopatra. The concert opens with John Tartaglia’s lovely *Pavane*, one of several works written by the late composer for William Schrickel and the MSO. Pianist Darin Tysdal, MSO Solo Competition winner, is featured in Cécile Chaminade’s rarely-performed *Concertstück* from 1888, and Pyotr Tchaikovsky’s beloved *Romeo and Juliet*, premiered two years earlier, brings down the curtain on the MSO’s 38th season.



Darin Tysdal



Christina Baldwin



Polina Nazaykinskaya

Nazaykinskaya Premiere, Mahler 5

Sunday, March 29 at 4pm

Saint Andrew’s Lutheran Church
900 Stillwater Road, Mahtomedi, MN

William Schrickel, conductor

Polina Nazaykinskaya – *Fenix* (MSO World Premiere of Large Orchestra Version)
Gustav Mahler – *Symphony No. 5*
in C-sharp Minor

Russian-born Polina Nazaykinskaya’s *Fenix* is the fifth of her compositions to be performed by the MSO. *Fenix*, the Spanish word for phoenix, alludes to the mythological bird that undergoes a fiery death, then regenerates and rises from its own ashes. This afternoon’s performance is the world premiere of the composer’s new version of *Fenix* with expanded instrumental forces. Following the 1904 premiere of Gustav Mahler’s *Symphony No. 5*, the composer complained that “nobody understood it.” This massive work, a kaleidoscopic journey from darkness and tragedy to light and renewed life, is heralded today as one of orchestral music’s greatest creations.



Carol Barnett



John Tartaglia



Clara Osowski

Concerts are free; donations are requested.
Programs subject to change. For more information:
msomn.org or call (612) 567-6724