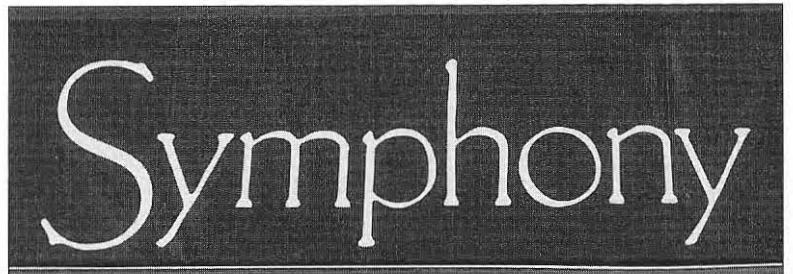
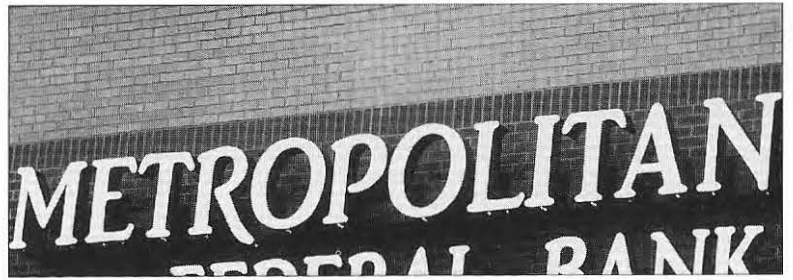


Our name is up in lights all across the Twin Cities!



The Metropolitan Symphony Orchestra

P.O. Box 581213

Minneapolis, MN 55458

(612)566-3419

Address correction requested

Non-Profit Org.
U.S. Postage
PAID
St. Paul, MN
Permit No. 4577

We thank you for your patronage and invite you to join us for our 13th season.

This season's programming is representative of the wonderful versatility exhibited by this unique performing ensemble. This versatility has enabled The Metropolitan Symphony Orchestra to cover a broad spectrum of musical genres and gain wide acceptance from its followers.

Highlights of the 1994-95 season include:

- Season opening concert at St. Luke's in St. Paul with works by Germanic composers Weber, Strauss and Mendelssohn.

- December concert in the newly opened sanctuary/performing hall of the Wayzata Community Church, reverberating with the sounds of Bernstein's *Symphonic Dances from 'West Side Story'*.

- Pat Kent, soprano, featured in Ravel's *Sheherazade*, song cycle.

- 'Ice On Fire' Gala Benefit at the Minnesota History Center featuring hot classics performed by Metropolitan Symphony musicians and cool jazz by The Horloge Trio.

- Pan-Hispanic concert at St. Matthew's Catholic Church featuring spirited works by Mexican, Spanish and Argentinian composers.

- The enormous chorus and orchestra of the moving *Symphony No. 2, 'Resurrection'* of Gustav Mahler.

- Soloists throughout the season include Mark Kosower, cello; John Gallagher, bass; Wes A. Huisinga, oboe; and Charles Parsons, organ.

"The Metropolitan Symphony Orchestra has a winning combination: great music performed in an atmosphere that is electric yet informal. The musicians give it their all, and every audience is entertained."

Steve Staruch

WCAL Radio



The Metropolitan Symphony Orchestra

After 12 seasons, we have proven ourselves as a major community orchestra.

Composed of 75 talented and dedicated musicians, The Metropolitan Symphony Orchestra continues to bring its audiences music of the very highest professional quality. Concerts throughout the Twin Cities, free of charge to our audiences, ensure that we maintain our mission of serving diverse communities.

Music Director Manny Laureano has led The Metropolitan Symphony Orchestra as its music director since 1987. He has held the post of principal trumpet with the Minnesota Orchestra since 1981 and has been co-music director of the Minnesota Youth Symphonies since 1988. As a conductor, Mr. Laureano has worked with a variety of ensembles ranging from having been Music Director of the Calhoun-Isles Community Band to a guest stint with the Minnesota Orchestra for a week of Young Persons Concerts. A native New Yorker, Mr. Laureano was educated at Juilliard, was a finalist in the 1975



International Trumpet Competitions and played principal trumpet with the Seattle Symphony before assuming his present appointments here in Minnesota.

Acknowledgements: Karen Anderson, art direction; Valerie Weber; Peter Marty Photography; Source Printing

1994-1995 Concert Season

SUNDAY
OCT. 23
3:00 PM

St. Luke's Catholic Church
1079 Summit Avenue, St. Paul, MN

Weber - *'Oberon' Overture*
Strauss - *Death and Transfiguration, symphonic poem, Op. 24*
Mendelssohn - *Symphony No. 5 in D minor - 'Reformation'*

SUNDAY
DEC. 4
7:00 PM

Wayzata Community Church
Ferndale and Wayzata Blvd., Wayzata, MN

John Gallagher, bass
Mark Kosower, cello
Mozart - *'Magic Flute' Overture*
Dragonetti - *Concerto for String Bass in A Major*
Tchaikovsky - *Variations on a Rococo Theme for cello, Op.33*
Bernstein - *Symphonic Dances from 'West Side Story'*

SUNDAY
FEB. 12
7:00 PM

Easter Lutheran Church
4200 Pilot Knob Road, Eagan, MN

Wes A. Huisinga, oboe
Pat Kent, soprano
Francaix - *L'Horloge de Flore*
Ravel - *Sheherazade, song cycle*
Rimsky-Korsakov - *Scheherazade, symphonic suite*

SATURDAY
MAR. 11
7:30-10:30 PM

'Ice On Fire' Gala Benefit - Minnesota History Center
345 Kellogg Blvd. W., St. Paul, MN

Warm up with hot classics, cool jazz and elegant cuisine in a spectacular city setting.
Ticket/donation price: \$40 per person.
For information call (612) 566-3419.

SUNDAY
MAR. 26
3:00 PM

St. Matthew's Catholic Church
Hall Avenue and Robie Street, St. Paul, MN

Reveultas - *Sensemaya*
deFalla - *Three dances from 'El Sombrero de Tres Picos'*
Surinach - *Ritmo Jondo*
Ginastera - *Four Dances from 'Estancia'*
Moncayo - *Huapango*

SUNDAY
MAY 7
3:00 PM

Central Lutheran Church - 75th Anniversary Celebration
333 South 12th Street, Minneapolis, MN

Central Lutheran Choir
Charles Parsons, organ
vocal soloists to be announced

Mahler - *Symphony No. 2 in C minor, 'Resurrection'*

Concert admission is free; donations are appreciated. Programs subject to change.

Please Support The Metropolitan Symphony Orchestra for 1994-95

Private giving is the major source of support for the orchestra. By covering general operating expenses, these funds enable the orchestra to fulfill its mission through commissioning new works, building a music library and featuring professional musicians as soloists with the orchestra. Contributions from individuals fund over half of the orchestra's monetary needs; additional support comes from donations at concerts rather than ticket sales. We invite you to join others in supporting The Metropolitan Symphony Orchestra this season.

_____ I/we wish to support the orchestra for the 1994-95 season.

Enclosed is:

- _____ \$500.00 -Sponsor
- _____ \$200.00 -Benefactor
- _____ \$100.00 -Patron
- _____ \$ 50.00 -Friend
- _____ \$ 35.00 -Supporter

Please make checks payable to THE METROPOLITAN SYMPHONY ORCHESTRAL ASSOCIATION. All contributions are tax-deductible. You may send this form and your check to:

The Metropolitan Symphony Orchestra
P.O. Box 581213
Minneapolis, MN 55458
Phone (612)566-3419

_____ Please *remove* my name from the MSO mailing list.

NAME(S) _____

ADDRESS _____

CITY _____ STATE _____ ZIP _____

DAY PHONE _____ EVE. PHONE _____



The Metropolitan Symphony Orchestra

Please detach at fold